

HICO FACILITY GUIDE



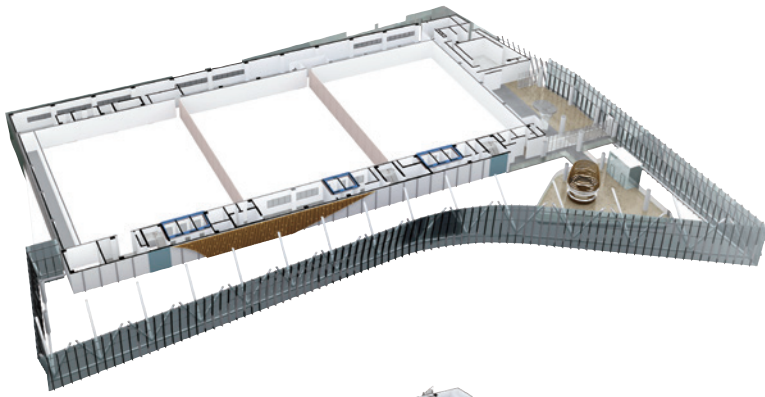
Gyeongju Hwabaek International Convention Center (HICO) is Korea's premier convention venue located in the Bomun Lake Resort Complex, one of Korea's most popular tourist destinations. Hwabaek was the name of the aristocratic council that ruled Korea for 1,000 years (57 BC–935 AD). The modern center that takes its name from Hwabaek is composed of 15 meeting rooms including a convention hall (3,421m²), exhibition hall (2,273m²), and outdoor exhibition space (4,000m²). HICO is located near abundant accommodations and tourist attractions, including UNESCO World Cultural Heritage Sites like Bulguksa Temple, Seokguram Grotto, Yangdong Village, and the specially designated Gyeongju Historic Areas.

- ◆ **Total Grounds: 31,336m²**
- ◆ **Facilities:** 1 convention hall (3,421m²)
1 exhibition hall (2,273m²)
9 organizer rooms
14 meeting rooms
outdoor exhibition space (4,000m²)
- ◆ **Commercial Facilities:** restaurant, coffee shop
business center
- ◆ **Wi-Fi Capacity: 5,000 users**
- ◆ **Parking Capacity: 520 vehicles**

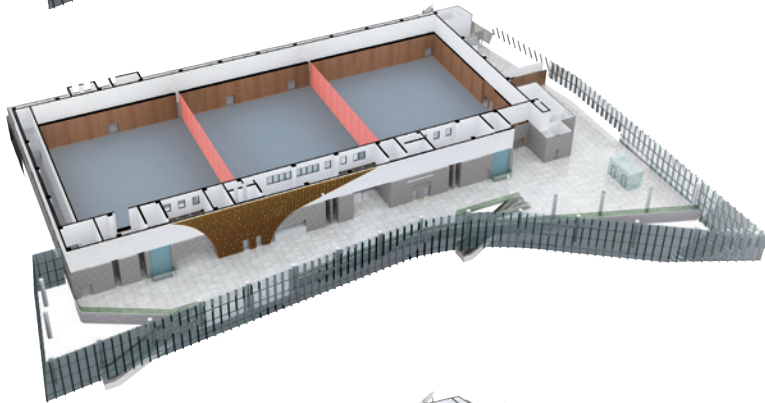
Main Events

Year	Title	Number of Attendees
2022	International Conference on Acoustics	1,500 attendees expected
2020	Asian–Australasian Society of Stereotactic and Functional Neurosurgery	400 attendees
2019	International Conference on Thermoelectrics	800 attendees
2018	UNESCO Asia–Pacific Regional Meeting of National Commissions	500 attendees
2017	General Meeting of the World Association of Nuclear Operators	800 attendees
2016	UN DPI/NGO Conference	3,000 attendees
2015	World Water Forum	20,000 attendees

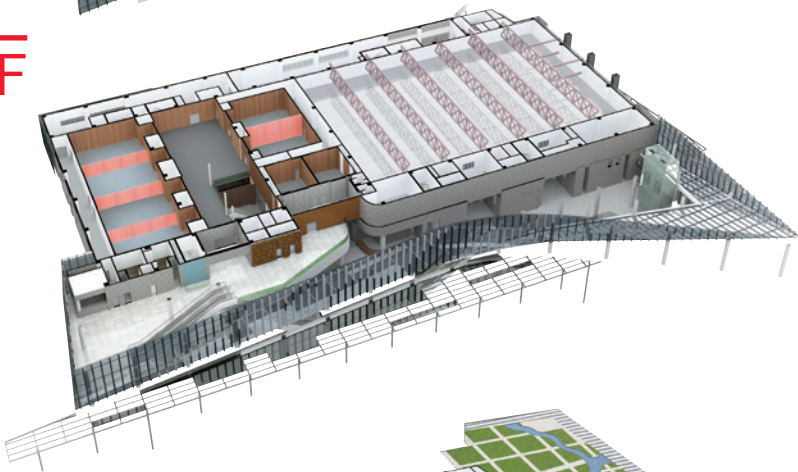
4F



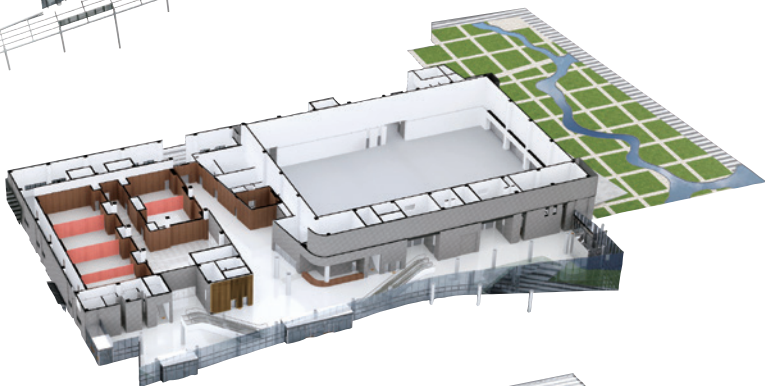
3F



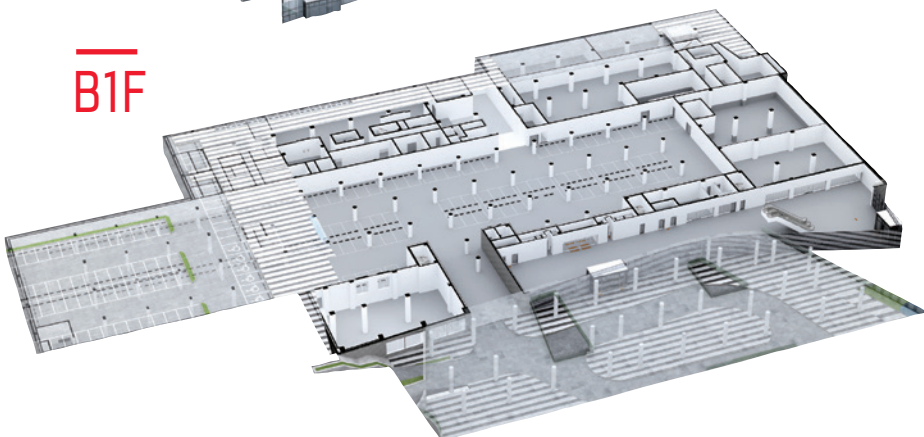
2F



1F



B1F



31,336m²

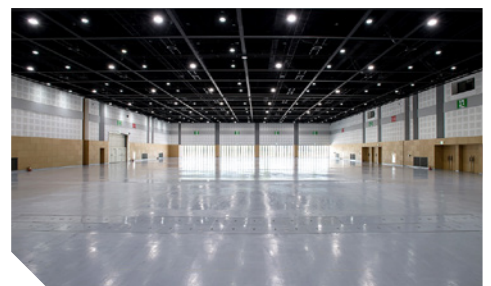
1 convention hall (3,421m²)

14 meeting rooms

1 exhibition hall (2,273m²)

9 organizer rooms

outdoor exhibition space (4,000m²)



HICO Facilities

Meeting Rooms

Facility	Area (m ²)	Size (m)	Ceiling Height (m)	Seating Capacity			
				Theater	Classroom	Banquet	
3F Convention Hall	300	3,421	89.1×38.4	12.5	3,500	1,800	1,600
2F Meeting Rooms	201	141	16.3×9.6	4.5	130	78	70
	202	141	16.3×9.6	4.5	130	78	70
	203	141	16.3×9.6	4.5	130	78	70
	204	141	16.3×9.6	4.5	130	78	70
	205	131	13.8×10.2	4.5	120	72	60
	206	131	13.8×10.2	4.5	120	72	60
	S207	80	8.7×9.3	3.9	60	30	-
	S208	80	8.7×9.3	3.9	60	30	-
1F Meeting Rooms	101	125	13.9×9.6	4.5	120	72	60
	102	125	13.9×9.6	4.5	120	72	60
	103	125	13.9×9.6	4.5	120	72	60
	104	125	13.9×9.6	4.5	120	72	60
	105	115	12.4×10.1	4.5	110	66	50
	106	115	12.4×10.1	4.5	110	66	50

- ◆ The convention hall can be divided into three smaller halls.
- ◆ Meeting rooms can be conveniently divided or combined to create a variety of spaces.



Exhibition Hall

Facility	Area (m ²)	Size (m)	Ceiling Height (m)	Capacity (3m x 3m booth)
1F Exhibition Hall	2,273	59.2×38.4	8	135

- ◆ The exhibition hall can be divided into two smaller halls.